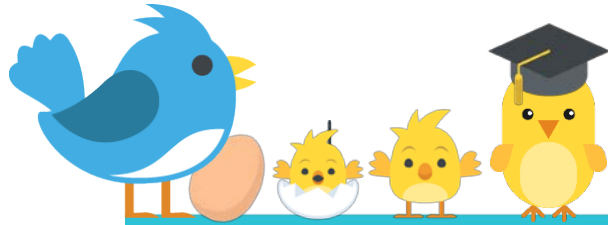




THANK YOU FOR JOINING US!



WEBINAR

Monday April 23, 2018

2:15-3:00 pm

Please note we are recording this webinar.



While you wait, check out beststartsblog.com

BSK In-Depth Evaluation RFP

APRIL 23, 2018



AGENDA

What we will cover today

- **What is Best Starts for Kids?**
- **Overview of the In-Depth Evaluation RFP**
- **Questions and Answers**

CONTACT US!

WE'RE LOOKING FORWARD TO YOUR QUESTIONS:



ON SKYPE

Chat your questions into the chat box.



OVER THE PHONE

We'll open up the phone line for questions.

WHAT IS BEST STARTS FOR KIDS?

VISION

We want to see more babies born healthy, more kids thrive, and more young people grow up to be happy, healthy, successful adults.



HOW DO WE DO IT?



PROMOTION



PREVENTION



**EARLY
INTERVENTION**



**POLICY & SYSTEMS
CHANGE**

Three Investment Areas

1. Investing Early (Prenatal-5)

2. Sustaining the Gain (5-24)

3. Communities of Opportunities

* This RFP seeks applications for the first two strategies

EVALUATION APPROACH

- Approximately 5 percent of the total program budget of \$65 million per year allocated for evaluation activities
- Internal King County evaluation staff assigned to each BSK project to support program staff in RFP and performance measurement development
- Biennium investment of \$ 2 million for external evaluation to partner with external evaluators for in-depth evaluation

Overview of BSK In- Depth Evaluation RFP

In-Depth Evaluation RFP

We seek applications in the 5 strategy areas:

- Child Care Health Consultation Service Delivery
- Community-Designed Home-Based Programs and Practice
- Technical Assistance
- School-Based Partnership
- Rebuild the Village

Additional Strategy Area Information Available

Archived webinars available online include:

Child Care Health Consultation:

- <https://beststartsblog.com/2018/01/24/child-care-health-consultation-service-delivery-rfp-recorded-info-session/>
- <https://beststartsblog.com/2018/02/05/watch-the-child-care-health-consultation-systems-development-info-session/>

Community-Designed Home-Based Services:

- <https://beststartsblog.com/2018/04/17/community-designed-home-based-services-rfp-recorded-info-session/>
- <https://beststartsblog.com/2018/03/27/recorded-webinar-for-prenatal-to-five-capacity-building-rfp/>

Trauma Informed and Restorative Practices (TIRP):

- <https://beststartsblog.com/2018/03/09/watch-the-trauma-informed-and-restorative-practices-rfp-webinar/>

Stopping the School-to-Prison Pipeline Webinar:

- <https://beststartsblog.com/2017/10/31/watch-the-stopping-the-school-to-prison-pipeline-webinar/>

Funding Specifics

- We expect to fund at a range of levels up to \$400K/Year for up to 3 years
- Funding amount in the RFP is for 2018 and 2019.
- Funding beyond 2019 will depend on King County Budget approval.
- We will try to align the evaluation contract period with program contract period

Project Narrative

- General Questions
- Project-Specific Questions
- Budget
- Collaborative approach with and engagement of stakeholders and community partners
- Application of Equity and Social Justice

TIMELINE *subject to change if necessary

RFP Issued	April 9, 2018
Webinar for Applicants	April 23 from 2:15-3:00 PM PST
Final Day to Ask Questions	May 7, 2018 5:00 PM PST
RFP Responses Due	May 14, 2018 5:00 PM PST
Interviews (if necessary)	Late May 2018
Notice of Selection	June 4, 2018
Earliest Start Date	August 1, 2018

SUBMISSION REQUIREMENTS

- **MUST BE RECEIVED BY May 14th AT 5:00 PM via ZoomGrants**
- **Project Narrative and Project-Specific questions have character limits**
- **Required and optional documents (e.g., letters of reference) can be uploaded on the Appendix tab.**
- **Budget template has been provided, but additional lines can be added.**

RATING CRITERIA

- **Organization Capacity and Experience**

- Organizational structure, staffing, and resumes (15 points)
- Evaluation Examples using Equity and Social Justice lens (10 points)
- Evaluation Experience in King County (15 points)
- Example of a Dissemination Material (5 points)

- **Proposed Activities and Methods**

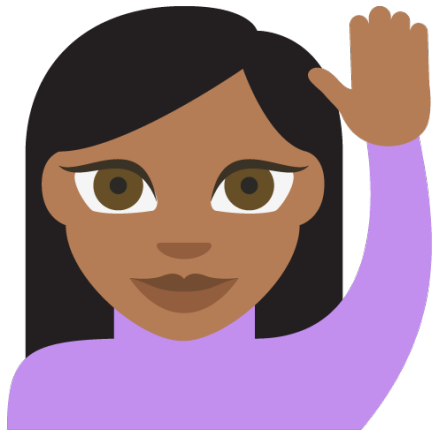
- Project Workplan (30 points)
- Community and Partner Engagement in Evaluation (10 points)
- Project Timeline and Milestones (5 points)

- **Project-Specific Questions (15-25 points)**

- **Budget (10 points)**

ASKING QUESTIONS

- Questions can be submitted to BSK.data@kingcounty.gov or via Activity Log
- Answers to the questions will be posted in Q & A document under Library section and will be updated every week.
- Updates to the existing RFP information or materials will be posted in Update document under Library section.



QUESTIONS?



CONTACT US!

best.starts@kingcounty.gov